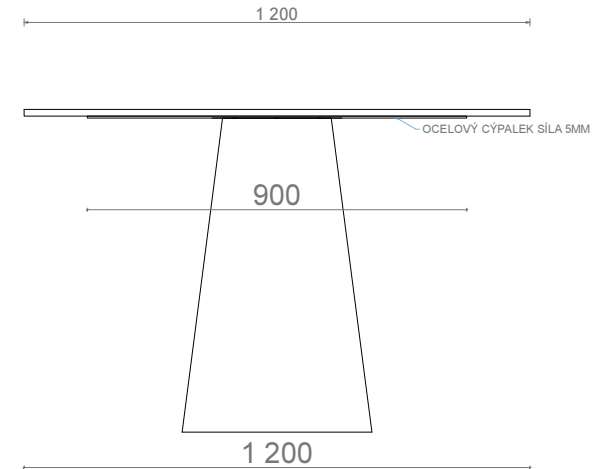
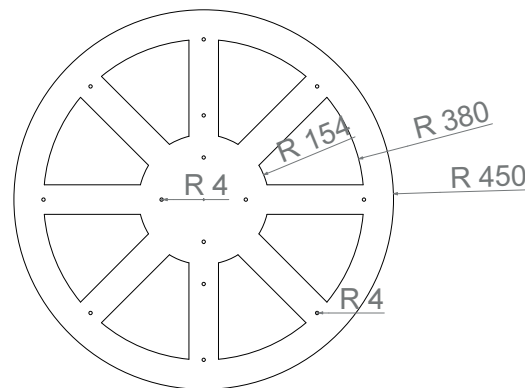
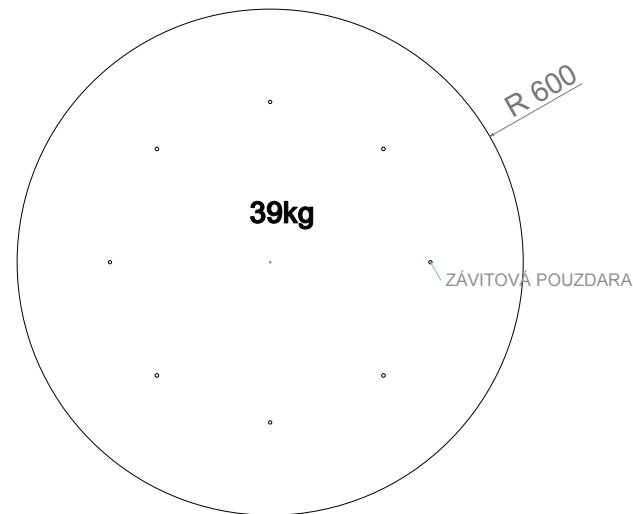




MOUNT

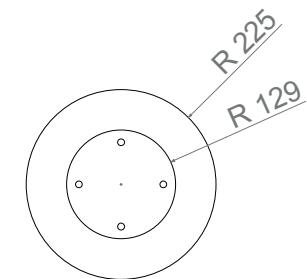
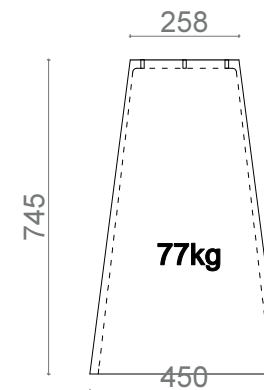
Gravelli

Technical drawing



ŘEZ NOHOU STOLU

POHLED Z HORA NA NOHU



All product sizes are in millimeters and have an informative character. The producer reserves the right to amend the technical specification at any time without previous warning.

Valid from: 01.03.2019

WWW.GRAVELLI.COM

Kruhová deska ocel d=1200x5mm
průchozí díry 8mm

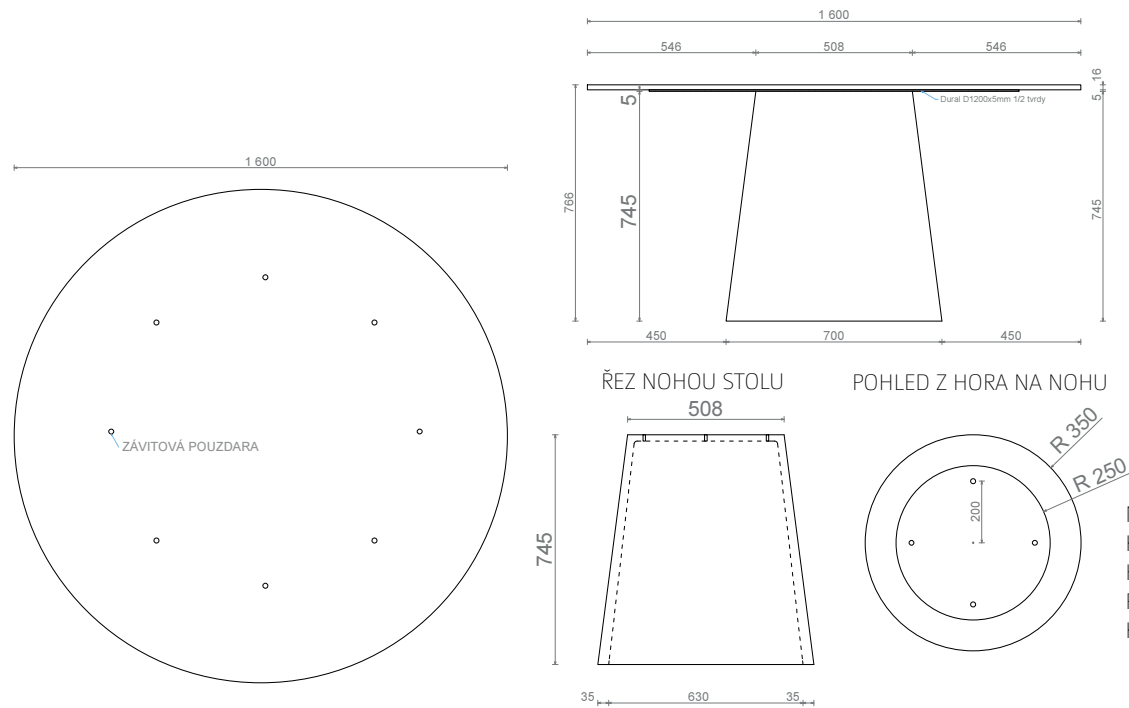
MOUNT
KRUHOVÝ STŮL O PRŮMĚRU 1200MM
HORNÍ DESKA: UHPC ŠEDÁ / ANTRACIT
PODSTAVA: MAČKANÝ ŠEDÁ / ANTRACIT
KONSTRUKCE: OCELOVÝ VÝPALEK 5MM SÍLA MATERIÁLU



MOUNT

Gravelli

Technical drawing



All product sizes are in millimeters and have an informative character. The producer reserves the right to amend the technical specification at any time without previous warning.

Valid from: 01.03.2019

NEVÝROBNÍ DOKUMENTACE:
KRUHOVÝ STŮL O PRŮMĚRU 1600MM
HORNÍ DESKA: UHPC ŠEDÁ HLADKÁ
PODSTAVA: MAČKANÝ ŠEDÝ
KONSTRUKCE: RAL 7042